

# CHAMOT

## Recombinant Human/Mouse/Rat BMP-2

CM063-5HP  
CM063-20HP  
CM063-100HP  
CM063-500HP  
CM063-1000HP



CHAMOT

喬默生物技術(上海)有限公司  
CHAMOT BIOTECHNOLOGY CO., LTD.

# CONTENT

**1** 产品简介

**2** 产品组成

**3** 产品储存

**4** 产品使用

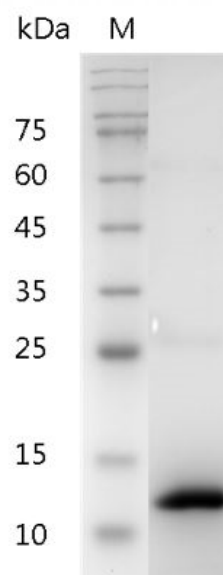
## Recombinant Human/Mouse/Rat BMP-2 (Bone morphogenetic protein-2)

|     |   |     |   |
|-----|---|-----|---|
| 编号: | CM063-5HP<br>CM063-20HP<br>CM063-100HP<br>CM063-500HP<br>CM063-1000HP | 规格: | 5 µg<br>20 µg<br>100 µg<br>500 µg<br>1 mg |
| 类别: | 重组蛋白  | 应用: | Functional Assay                          |

### 产品简介

**描述:** BMP-2 like other bone morphogenetic proteins, plays an important role in the development of bone and cartilage. It is involved in the hedgehog pathway, TGF beta signaling pathway, and in cytokine-cytokine receptor interaction. It is also involved in cardiac cell differentiation and epithelial to mesenchymal transition. Like many other proteins from the BMP family, BMP-2 has been demonstrated to potentially induce osteoblast differentiation in a variety of cell types. BMP-2 may be involved in white adipogenesis and may have metabolic effects.

**来源:** *Escherichia coli*  
**纯度:** >95% as determined by SDS-PAGE.  
**生物学活性:** Measure by its ability to induce alkaline phosphatase production by ATDC5 cells. The ED<sub>50</sub> for this effect is < 1.0 µg/mL.  
**内毒素检测:** < 0.1 EU per 1 µg of the protein by the LAL method.  
**蛋白序列:** MQAKHKQRKRLKSSCKRHPLYVDFSD  
VGWNDWIVAPPGYHAFYCHGECPEP



SDS- PAGE analysis of recombinant human BMP-2

LADHLNSTNHAIVQTLVNSVNSKIPKA  
CCVPTELSAISMLYLDENEKVVVLKKNYQ  
DMVVEGCGCR with polyhistidine  
tag at the C-terminus

## 产品组成

成分： 从含有 20 mM sodium citrate, 0.2 M NaCl, pH 4.5溶液中冻干的蛋白质。

## 产品储存/运输

| 产品形式     | 储存温度        | 储存时间     |
|----------|-------------|----------|
| 冻干粉      | -20°C至-80°C | 自收到之日起1年 |
| 重悬液（初始）  | 2°C至8°C     | 不超过1周    |
| 重悬液（经稀释） | -20°C至-80°C | 3到6个月    |

运输方式： 蓝冰

## 产品使用

- 1、开盖前，建议3000-3500rpm离心5min。
- 2、推荐使用无菌水重悬冻干粉，溶液浓度不低于100µg/mL，不高于1mg/mL，并室温静置至少20min以充分溶解。勿涡旋剧烈振荡。
- 3、重悬后的溶液，2-8°C无菌保存不超过1周。
- 4、如需长期保存，推荐使用无菌的含载体蛋白（如0.1%BSA、10%FBS或5%HSA）的溶液进一步稀释（不低于10ug/mL）后分装保存，-20°C至-80°C无菌保存3到6个月。无血清实验需求时，可更换为5%海藻糖溶液作为载体。避免反复冻融。

WB= Western Blot; IP= Immunoprecipitation; IF= Immunofluorescence; IHC= Immunohistochemistry;  
FACS= Fluorescence activated Cell Sorting; FA= Functional Assay